

**IOTECH**  
**SOLUTIONS**

Smart Sensing. Real Solutions

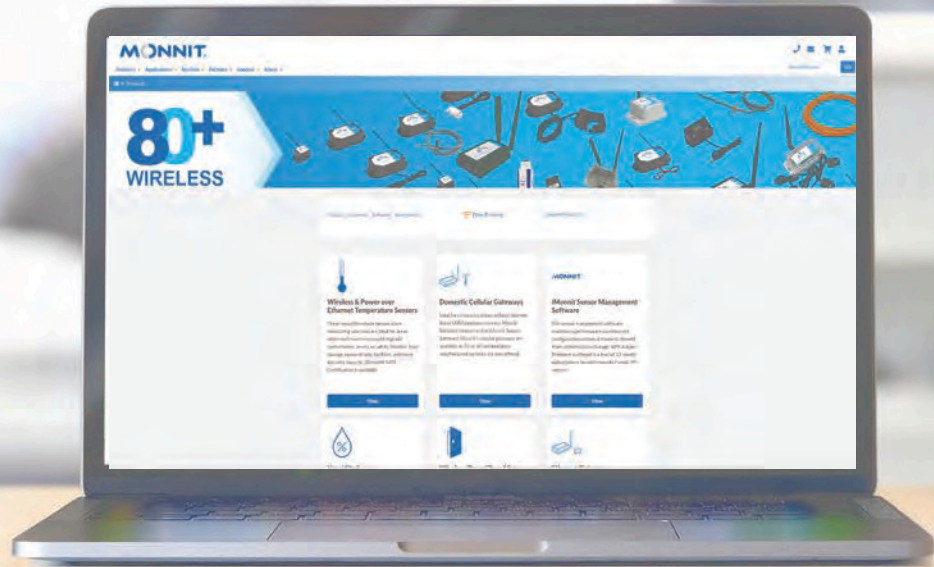
**AUTHORISED RESELLER**

**MONNIT**<sup>®</sup>

**Remote Monitoring for Business**

**PRODUCT CATALOG**

# ABOUT MONNIT



The origin story of the Internet of Things (IoT) begins with Monnit. Before our inception in 2010, we were already at the forefront of embedding technology into machines and devices to make them talk, delivering valuable data to business leaders.

Monnit Remote Monitoring Solutions for virtually any industry use case have delivered 39+ billion data points in more than 85 countries for 52,000 customers. Monnit's 80+ IoT sensors remotely monitor temperature, light, humidity, motion, water, pressure, vibration, and much more. You can analyze data using iMonnit cloud software and get alerts via email, text, or call when our sensors detect a change you need to know.



## The Best Decisions Start with the Best Intelligence

Monnit helps you solve challenges and streamline operations using data from the Internet of Things (IoT).

## Actionable Data is the Solution

Running a business requires a lot of decision-making and taking action. Of course, not just any decision or action will do. Your business depends on you making the best decisions at the best times. But you need data to do it right. Actionable data to achieve actionable results.

That's what Monnit gives you with our Remote Monitoring Solutions—easily, quickly, reliably. Monnit Solutions—with our Sensors, Gateways, and Software for virtually any application—deliver the data you need to run your organization right. The days of business guessing games are long gone with Monnit.

Monnit IoT Solutions can help you make better-informed decisions and take the right actions to improve your business today.

# HOW MONNIT WORKS



**80+ Sensors**  
Monitor Important  
Conditions

**Wireless Gateways**  
Relay Data to  
Software

**Software Choices**  
Get Remote Access to  
Dashboards / Alerts



## Know the Best Places to Install ALTA Wireless Sensors

The ALTA<sup>®</sup> Site Survey Tool tells you precisely where to install ALTA Wireless Sensors to achieve optimal data communication performance. The handheld tool measures the TRUESIGNAL<sup>™</sup> by assessing the wireless signal strength, quality, and background interference wherever you consider placing ALTA Sensors within your Internet of Things (IoT) network.

Before you install your sensors, you use the Site Survey Tool to perform a quick signal test. The tool's LCD reports the average TRUESIGNAL percentage for the area you're assessing along with Pass, Poor, or Fail based on your preferred signal reliability setting.

You can choose a signal reliability setting—Mission-Critical, Strong, or Functional—in the cloud-based iMonnit IoT Monitoring and Sensor Management Software. The tool uses this setting to calculate the TRUESIGNAL according to your environment, background interference, use case, and how frequently and reliably your sensors need to send data. With the ALTA Site Survey Tool, you can:

- *Plan and design your IoT network.*
- *Predict the signal reliability of possible sensor locations.*
- *Match data communication needs more precisely to your IoT use case.*
- *Optimize your IoT network by fine-tuning sensor placement.*

The tool helps you configure an ideal IoT network in:

- *Environments with expansive open spaces of more than 1,200 feet (400 meters) and fewer obstructions, such as Greenhouses, petrochemical plants, agriculture, etc.*
- *Buildings with extensive concrete, rebar, and square footage, such as high rises, skyscrapers, sports and concert arenas, stadiums, schools, hospitals, churches, etc.*
- *Warehouses with many obstructions, and shipping container and tractor-trailer yards*

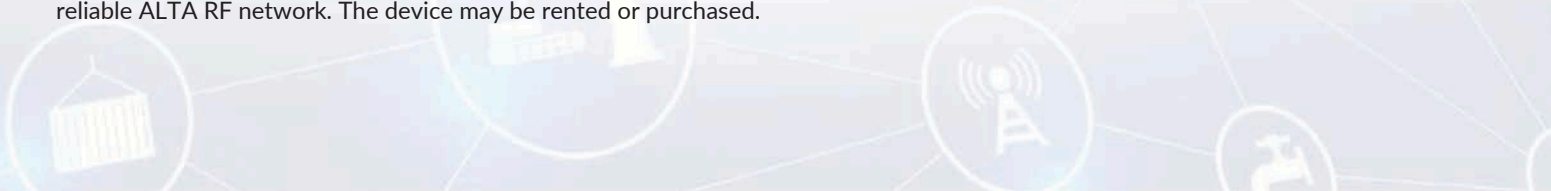
The secure, long-range ALTA data communications platform with interference immunity delivers sensor data to gateways more than 1,200 feet away (non-line-of-sight) through 12+ walls and up to one mile (line-of-sight). Using the ALTA Site Survey Tool, you get the precise TRUESIGNAL reliability you can count on for sensors installed at your specific testing locations.

We recommend that your complex installations incorporate the ALTA Site Survey Tool to ensure smooth deployment and the most reliable ALTA RF network. The device may be rented or purchased.



**Battery / Enclosure** AAA

**Part Number** MNO2-x-W2-SS-RT (rental unit)  
MNO2-x-W2-SS-ST (purchase)





**A**

**ALTA Wireless Sensors**

*Monitor Virtually Anything Anywhere*

**B**

**ALTA Gateways**

*Take Control of Valuable Data*

**C**

**ALTA-ISX**

*IECEX-Certified Wireless Sensors*

**D**

**PoE-X**

*PoweroverEthernet Insights*

**E**

**MoWi WiFi**

*More Agility with Wi-Fi*



## ALTA<sup>®</sup> Wireless Sensors

<b>Temperature Sensors</b>	<b>1</b>	<b>Water Detection</b>	<b>11</b>
Wireless Standard Temperature Sensor	1	Wireless Water Rope Sensor	11
Wireless High Temperature Sensor	1	Wireless Water Detect +	11
Wireless Low Temperature Sensor	1	Wireless Water Detection Puck	11
Wireless Duct Temperature Sensor	2	Wireless Water Detection	12
Wireless Digital Temperature Sensor	2		
<b>Humidity Sensors</b>	<b>2</b>	<b>Wireless Pulse Counter</b>	<b>12</b>
<b>Open / Closed Sensors</b>	<b>3</b>	<b>Wireless Pressure Sensors</b>	<b>12</b>
<b>Motion and Occupancy Sensors</b>	<b>3</b>	Wireless 50 PSIG Pressure Meter	12
Wireless PIR Motion Sensor	3	Wireless 300 PSIG Pressure Meter	13
Wireless Motion+ Sensor	3	Wireless 750 PSIG Pressure Meter	13
<b>AC Current Meters</b>	<b>3</b>	Wireless 3000 PSIG Pressure Meter	13
Wireless 20 Amp AC Current Meter	3	<b>Wireless Button Press Sensors</b>	<b>13</b>
Wireless 150 Amp AC Current Meter	4	<b>Wireless Gas Detection Sensors</b>	<b>14</b>
Wireless 500 Amp AC Current Meter	4	Wireless Carbon Monoxide (CO) Sensor	14
<b>Light Meters</b>	<b>4</b>	Wireless Carbon Dioxide (CO <sub>2</sub> ) Sensor	14
Wireless LUX Light Meter	4	Wireless Hydrogen Sulfide (H <sub>2</sub> S) Sensor	14
Wireless PAR Light Meter	4	<b>Resistance Sensors</b>	<b>14</b>
<b>Three-Phase Current Meters</b>	<b>5</b>	<b>Ultrasonic Ranging Sensors</b>	<b>15</b>
Wireless 20 Amp Three-Phase Current	5	Wireless Enterprise Ultrasonic Sensor	15
Wireless 150 Amp Three-Phase Current	5	Wireless Industrial Ultrasonic Sensor	15
Wireless 500 Amp Three-Phase Current	5	<b>Air Quality Sensor</b>	<b>15</b>
<b>Interface Meters</b>	<b>6</b>	<b>Air Velocity Sensor</b>	<b>16</b>
Wireless Dry Contact Sensor	6	<b>Differential Air Pressure Sensor</b>	<b>16</b>
Wireless 20 mA Interface Current Meter	6	<b>Food Probe Thermometer</b>	<b>16</b>
Wireless 0-5 VDC Interface Volt Meter	6	<b>Vehicle Detection Sensor</b>	<b>17</b>
Wireless 0-10 VDC Interface Volt Meter	6	<b>Propane Tank Level Sensor</b>	<b>17</b>
<b>Thermocouple Sensors</b>	<b>7</b>	<b>Soil Moisture Sensor</b>	<b>18</b>
<b>Accelerometers</b>	<b>7</b>	<b>ALTA Wireless Sensor Sizes</b>	<b>19</b>
Wireless G-Force Snapshot Accelerometer	7		
Wireless Advanced Vibration Meter	7		
Wireless Tilt Detection Sensor	8		
Wireless Vibration Meter	8		
Wireless G-Force Max - Avg Accelerometer	8		
Wireless Tilt Sensor	8		
Wireless Activity Detection Sensor	9		
<b>Wireless Voltage Detection</b>	<b>9</b>		
Wireless 200 VDC Voltage Meter	9		
Wireless 500 VAC Voltage Meter	10		
Wireless 200 VDC Voltage Detection Sensor	10		
Wireless 500 VAC Voltage Detection Sensor	10		



For more information about these products or to place an order, please contact [info@iotech-solutions.co.za](mailto:info@iotech-solutions.co.za) or +2763 900 3492. Visit [www.iotech-solutions.co.za](http://www.iotech-solutions.co.za)



## Temperature Sensors

### Wireless Standard Temperature Sensors

The ALTA Wireless Temperature Sensors uses an NTC-type thermistor to measure temperature from -40°C to 125°C (-40°F to 257°F). The sensor outputs the ambient temperature in degrees Fahrenheit or Celsius. The sensor is accurate to  $\pm 1^{\circ}\text{C}$  ( $\pm 1.8^{\circ}\text{F}$ ). Increased accuracy to  $\pm 0.25^{\circ}\text{C}$  ( $\pm 0.45^{\circ}\text{F}$ ) can be accomplished with user calibration.

**Battery / Enclosure**

AA  
Coin Cell  
Industrial

**Part Number**

MNS2-9-W2-TS-ST  
MNS2-9-W1-TS-ST  
MNS2-9-IN-TS-ST

Longer probe lengths are available for this product!



### Wireless High Temperature Sensors

ALTA Wireless High Temperature Sensors use an RTD to accurately measure temperatures from -50°C to +370°C. The solution is perfect for critical, high temperature applications such as ovens, heaters, furnaces, and boilers.

**Battery / Enclosure**

AA  
Industrial

**Part Number**

MNS2-9-W2-TS-HT-L03  
MNS2-9-IN-TS-HT-L03

Longer probe lengths are available for this product!



### Wireless Low Temperature Sensors

ALTA Wireless Low Temperature Sensors use an RTD to accurately measure temperatures from -200°C to 0°C. This solution is recommended for medical-grade freezers that cool at temps colder than -40°C, cryogenic applications, as well as standard freezers and refrigerators.

**Battery / Enclosure**

AA  
Industrial

**Part Number**

MNS2-9-W2-TS-LT-L03  
MNS2-9-IN-TS-LT-L03

Longer probe lengths are available for this product!



## Wireless Duct Temperature Sensors

Wireless Duct Temperature Sensors in commercial, enterprise, and industrial-grade housings are available for duct monitoring. Each duct temp sensor features a probe temperature range of -40°C to +150°C (-40°F to +302°F) and an NTC-type thermistor with UL-listed plenum cable for superior accuracy.

Battery / Enclosure	Part Number
AA	MNS2-9-W2-TS-DT-L08
Coin Cell	MNS2-9-W1-TS-DT-L08
Industrial	MNS2-9-IN-TS-DT-L08



## Wireless Digital Temperature Sensor

Monnit's ALTA Digital Temperature Sensor has a range of -40°F to +257°F (-40°C to +125°C) to support cold food storage, clinical vaccine storage, research labs, and other health-related fields.

Battery / Enclosure	Part Number
AA	MNS2-9-W2-TS-SD-L03



## Humidity Sensors

### Wireless Humidity Sensors

ALTA Wireless Humidity Sensors allow you to monitor the relative humidity of the air within a room or enclosure. This solution is ideal for monitoring humidity within greenhouses, industrial spaces, museums, saunas, and humidors. They can also be used for residential applications such as controlling mold, mildew, or dust mites.

Battery / Enclosure	Part Number
AA	MNS2-9-W2-HU-RH
Coin Cell	MNS2-9-W1-HU-RH
Industrial	MNS2-9-IN-HU-RH



## Open / Closed Sensor

### Wireless Open / Closed Sensor

ALTA Wireless Open / Closed Sensors provide information on the status of doors, windows, cabinets, etc. Know if a building or area is accessed when it should not, or if a door or window has been left open.

Battery / Enclosure	Part Number
AA	MNS2-9-W2-OC-ST
Coin Cell	MNS2-9-W1-OC-ST
Industrial	MNS2-9-IN-OC-ST



## Infrared Motion & Occupancy Sensors

### Wireless Infrared Motion Sensor

Detect motion by people or animals in virtually any area or room up to 15 feet and within an 80° angle. The Monnit ALTA Wireless PIR Motion Sensors use passive infrared (PIR) technology to detect heat signatures to augment facility security, protect assets, and optimize building services through usage data. A wide-angle option even tracks a broader view of 110° to give you a good look into what's happening at your facilities.

Battery / Enclosure	Part Number
AA	MNS2-9-W2-MS-IR
AA (Wide Angle)	MNS2-9-W2-MS-IR-WA
Coin Cell	MNS2-9-W1-MS-IR



### Wireless Infrared Motion+ Sensor

Monitor movement, ambient temperature, and relative humidity (RH) with the three-in-one ALTA Wireless Motion+ Sensor. The easy-to-install multi-sensor can alert facility managers about three essential conditions in virtually any environment. Measure motion up to 15 feet and within an 80° angle. Track temperature between -40°F to +257°F (-40°C to +125°C). Monitor up to 100% RH with a scientific-grade element.

Battery / Enclosure	Part Number
AA - BLACK	MNS2-9-W2-MS-IRH
AA - WHITE	MNS2-9-W2-MS-IRH-WE



## AC Current Meters

### Wireless 20 Amp AC Current Meter

This low-power 20 Amp AC Current Meter remotely audits power consumption. The electric power draw of servers, vending machines, or workout machines can all be monitored using this current transducer.

Battery / Enclosure	Part Number
AA	MNS2-9-W2-CM-020
Industrial	MNS2-9-IN-CM-020



## Wireless 150 Amp AC Current Meter

Remotely monitoring your business with a 150 Amp AC Current Meter opens up many possibilities. This is enough to measure the power consumption of server systems and current used by low-to medium-power industrial equipment.

**Battery / Enclosure**

AA  
Industrial

**Part Number**

MNS2-9-W2-CM-150  
MNS2-9-IN-CM-150



## Wireless 500 Amp AC Current Meter

A one-phase high-power 500 Amp AC Current Meter is ideal for measuring commercial generator power consumption, heavy-duty industrial equipment, or main breakers in industrial and commercial panels.

**Battery / Enclosure**

AA  
Industrial

**Part Number**

MNS2-9-W2-CM-500  
MNS2-9-IN-CM-500



## Light Meter

### Wireless LUX Light Meter

Wireless ALTA LUX Light Meters monitor light intensity from (0-83,000 lux) indoors. The ALTA LUX Light Meter helps protect valuable assets like artifacts, pharmaceuticals, and food ingredients from excessive light exposure and improve security system lighting.

**Battery / Enclosure**

AA  
Industrial

**Part Number**

MNS2-9-W2-LS-LM  
MNS2-9-IN-LS-LM



### Wireless PAR Light Meter

The scientific-grade ALTA Wireless Photosynthetically Active Radiation (PAR) Light Meter measures the light spectrum (389 to 692 nanometers) that directly affects plant health and growth. Ideal for agritech operations, the PAR Light Meter helps growers monitor the performance of grow lighting systems to give crop canopies the light needed for photosynthesis.

**Battery / Enclosure**

Industrial

**Part Number**

MNS2-9-IN-LS-PAR



## Three-Phase Current Meters

### Wireless 20 Amp Three-Phase Current Meter

Incorporate this ALTA 20 Amp Three-Phase Current Meter revenue-grade device, into facilities relying on powerful devices and systems, such as machine shops. Remotely monitor power consumption to track motor health or power system faults. Monitor min/max RMS current, duty cycle of each phase, combined amp hours, and other metrics.

<b>Battery / Enclosure</b>	<b>Part Number</b>
Industrial	MNS2-9-IN-3P-020



### Wireless 150 Amp Three-Phase Current Meter

Remotely monitoring your business with a 150 Amp Three-Phase Current Meter opens up many possibilities. This is enough to measure the power consumption of medium- to heavy-duty three-phase systems: environmental chambers, very large HVAC systems, or medium-and heavy-duty industrial motors.

<b>Battery / Enclosure</b>	<b>Part Number</b>
Industrial	MNS2-9-IN-3P-150



### Wireless 500 Amp Three-Phase Current Meter

Use this meter and be alerted about imbalances or power faults. The ALTA 500 Amp Three-Phase Current Meter uses three 0–500 amp current transducers to monitor the main power for commercial buildings.

<b>Battery / Enclosure</b>	<b>Part Number</b>
Industrial	MNS2-9-IN-3P-500



## Interface Meters

### Wireless Dry Contact Sensors

The ALTA Wireless Dry Contact Sensor detects when there is contact between the two wired endpoints. It can easily be integrated into existing switches or contact plates. When the sensor detects contact between the two endpoints, it will immediately turn on the RF radio and transmit the data to the wireless gateway and iMonnit Monitoring and Notification System.

**Battery / Enclosure**  
AA Coin Cell Industrial

**Part Number**  
MNS2-9-W2-DC-CF-L01  
MNS2-9-W1-DC-CF-L01  
MNS2-9-IN-DC-CF-L01

Longer  
probe lengths  
are available  
for this  
product!



### Wireless 20 mA Interface Current Meter

Easily update existing scientific or industrial sensors to wirelessly collect process data. Remotely monitor current transducers, as well as oxygen, pH, magnetic flow sensors, and more.

**Battery / Enclosure**  
AA Coin Cell Industrial

**Part Number**  
MNS2-9-W2-MA-020  
MNS2-9-W1-MA-020  
MNS2-9-IN-MA-020



### Wireless 0–5 VDC Interface Volt Meter

Easily monitor potential differences (voltage) between two electrical points. Use turnkey voltage meters to retrofit common industrial sensors, monitor batteries, renewable energy sources, and more.

**Battery / Enclosure**  
AA Coin Cell Industrial

**Part Number**  
MNS2-9-W2-VM-005  
MNS2-9-W1-VM-005  
MNS2-9-IN-VM-005



### Wireless 0–10 VDC Interface Volt Meter

Add turnkey wireless voltage meters to commonly used industrial sensors and remotely monitor the voltage between two points. Get data from previously “dumb” devices to optimize operations.

**Battery / Enclosure**  
AA Coin Cell Industrial

**Part Number**  
MNS2-9-W2-VM-010  
MNS2-9-W1-VM-010  
MNS2-9-IN-VM-010



## Thermocouple

### Wireless Thermocouple Sensors

The ALTA Wireless Thermocouple is available with either a hardwired thermocouple or a K-Type connector (for supporting various thermocouple types and ranges) to measure high temperature applications. The hardwired thermocouple option measures temperatures from -100°C (-148°F) to 400°C (752°F).



#### FIXED PROBE

Battery / Enclosure	Part Number
AA	MNS2-9-W2-TS-TC-HW
Coin Cell	MNS2-9-W1-TS-TC-HW
Industrial	MNS2-9-IN-TS-TC-HW

#### K-TYPE CONNECTOR

Battery / Enclosure	Part Number
AA	MNS2-9-W2-TS-TC-KP
Coin Cell	MNS2-9-W1-TS-TC-KP
Industrial	MNS2-9-IN-TS-TC-KP

## Accelerometers

### Wireless G-Force Snapshot Accelerometer

The G-Force Snapshot Sensor activates at a set time interval (defined by user) and measures g-force along X, Y, and Z axes. Primary use is as an inclinometer or tilt sensor.

Battery / Enclosure	Part Number
AA Coin Cell Industrial	MNS2-9-W2-AC-GS
	MNS2-9-W1-AC-GS
	MNS2-9-IN-AC-GS



### Wireless Advanced Vibration Meter

The Advanced Vibration Meter uses an accelerometer to measure vibration and frequency on three axes. The sensor reports vibration (acceleration, velocity, displacement, or acceleration peak), frequency (Hz/RPM), and crest factor on all three axes. It also reports duty cycle (how much of the report interval that vibration was present), and temperature.

Battery / Enclosure	Part Number
AA	MNS2-9-W2-AC-ADV
Industrial	MNS2-9-IN-AC-ADV-L10



## Wireless Tilt Detection Sensor

With a measurement range of 0–180° and accuracy of 0.5°, this sensor instantly reports (in degrees) when movement exceeds preset limits. If a guard arm is breached, the tilt detect sensor sends an alert via a text, email, or call. The device can sense whether it is “Up,” “Down,” and “Stuck.” Any movement between these regions will be recorded.

**Battery / Enclosure**  
AA Coin Cell Industrial

**Part Number**  
MNS2-9-W2-AC-TT  
MNS2-9-W1-AC-TT  
MNS2-9-IN-AC-TT



## Wireless Vibration Meter

The ALTA Vibration Meter reports data as speed (mm/s) and frequency (Hz) on all three axes, and how long the sensor was measuring during the interval. Measurement methods are: Peak acceleration RMS, peak velocity RMS, and true RMS.

**Battery / Enclosure**  
AA  
Industrial

**Part Number**  
MNS2-9-W2-AC-VM  
MNS2-9-IN-AC-VM



## Wireless G-Force Max-Avg Accelerometer

The G-Force Max/Avg Sensor measures the maximum and average g-force values along X, Y, and Z axes. Custom Delta values allow for the user to set thresholds which, when exceeded, will trigger the sensor to report in immediately. Configurable data rates allow for more samples to be collected for every measurement with higher data rates resulting in faster reaction time. The data reported is useful for tracking periodic motion and event detection.

**Battery / Enclosure**  
AA  
Industrial

**Part Number**  
MNS2-9-W2-AC-GM  
MNS2-9-IN-AC-GM



## Wireless Tilt Sensor

Better understand your operations, machine health, or structure status by collecting inclination data or tracking pitch and roll with Monnit's ALTA Wireless Tilt Sensors. If a tilt sensor detects a deviation from your preset limits during measurement, an alert is issued via a text, email, or call.

Battery/Enclosure	Part Number
AA	MNS2-9-W2-AC-TL
Coin Cell	MNS2-9-IN-AC-TL
Industrial	MNS2-9-W1-AC-TL



## Wireless Activity Detection Sensor

Find out instantly if machinery, equipment, supplies, or other key assets vibrate or abruptly move too much. The ALTA Wireless Activity Detection Sensor monitors and measures the number of vibrations, frequency, and sudden movement or lack of movement of surfaces and objects.

Battery/Enclosure	Part Number
AA	MNS2-9-W2-AC-TL
Coin Cell	MNS2-9-IN-AC-TL
Industrial	MNS2-9-W1-AC-TL



## Wireless Voltage Detection

### Wireless 200 VDC Voltage Meter

Integrate a Wireless 200 VDC Voltage Meter to monitor the electrical status of items you depend on, like industrial lift trucks, solar PV panels, and power banks. Remotely monitor status and operation.

Battery/Enclosure	Part Number
AA	MNS2-9-W2-VM-200
Coin Cell	MNS2-9-W1-VM-200
Industrial	MNS2-9-IN-VM-200



## Wireless 500 VAC Voltage Meter

Use this Wireless 500 VAC Voltage Meter to track the voltage status of commercial and industrial equipment. Whether it's battery- or line-powered, remotely monitor and always know power status.

Battery/Enclosure	Part Number
AA	MNS2-9-W2-VM-500
Coin Cell	MNS2-9-W1-VM-500
Industrial	MNS2-9-IN-VM-500



## Wireless 200 VDC Voltage Detection Sensor

This Wireless 200 VDC Voltage Sensor monitors the on/off status of equipment, machines, or battery levels. Track power sources up to 200 VDC for industrial vehicles, ATVs, adapters, PV solar equipment, and more.

Battery/Enclosure	Part Number
AA	MNS2-9-W2-VD-200
Coin Cell	MNS2-9-W1-VD-200
Industrial	MNS2-9-IN-VD-200



## Wireless 500 VAC Voltage Detection Sensor

Wirelessly monitor voltage for critical equipment and systems up to 500 VAC. Keep an eye on sprinkler systems, HVAC, power couplings, and sump pumps. Know about electrical faults and act quickly to keep business moving.

Battery/Enclosure	Part Number
AA	MNS2-9-W2-VM-500
Coin Cell	MNS2-9-W1-VM-500
Industrial	MNS2-9-IN-VM-500



## Water Detection Sensors

### Wireless Water Rope Sensor

The ALTA Wireless Water Rope Sensor detects the presence of water anywhere along the surface of the rope. The sensor comes with 10 feet of water rope. Additional 10-ft. sections are available and can be connected up to 100 feet.

**Battery/Enclosure**

AA  
Coin Cell  
Industrial

**Part Number**

MNS2-9-W2-WS-WR  
MNS2-9-W1-WS-WR  
MNS2-9-IN-WS-WR



### Wireless Water Detect Plus Sensors

The Wireless Water Detect Plus Sensor employs a wall- or surface-mountable probe at the end of a 3' lead to detect water's presence or absence. The probe is often used in sanitation or process applications to detect levels in reservoirs or vats of non-combustible liquid.

**Battery/Enclosure**

AA  
Coin Cell  
Industrial

**Part Number**

MNS2-9-W2-WS-WP-L03  
MNS2-9-W1-WS-WP-L03  
MNS2-9-IN-WS-WP-L03



### Wireless Water Detection Puck

Housed in a vulcanized hockey puck, this submersible sensor detects water's presence or non-presence. Drop this sensor nearly anywhere to monitor for leaks / spills, e.g., production, manufacturing, or building maintenance.

**Battery/Enclosure**

AA - Black  
AA - White

**Part Number**

MNS2-9-PK-WS-PS  
MNS2-9-PK-WS-PS-WT



## Wireless Water Detection Sensors

These popular sensors detect the presence or non-presence of non-combustible liquids (e.g., water). Deploy in such applications as sump pump monitoring, water heater drip pan monitoring, or between drywall and subflooring.

Battery/Enclosure	Part Number
AA	MNS2-9-W2-WS-WD-L03
Coin Cell	MNS2-9-W1-WS-WD-L03
Industrial	MNS2-9-IN-WS-WD-L03



## Pulse Counters

### Wireless Pulse Counters

The ALTA Wireless Pulse Counter can be connected to the pulse output of a system (water meter, power meter, etc.) to count the number of actuations within a given time frame. The Wireless Pulse Counter is an electronic counter capable of counting passive (open/closed switch) or active (up to +15 VDC) pulses.

Battery/Enclosure	Part Number
AA	MNS2-9-W2-PC-01
Coin Cell	MNS2-9-W1-PC-01
Industrial	MNS2-9-IN-PC-01



## Pressure Meters

### Wireless 50 PSIG Pressure Meters

Monnit's Wireless 50 PSIG Pressure Meters keep lab managers, field service engineers, and other professionals connected to processes and machinery. If line pressure deviates from user-set thresholds, this pressure sensor instantly alerts the user via a text, email, or call.

Battery/Enclosure	Part Number
AA	MNS2-9-W2-PS-050
Industrial	MNS2-9-IN-PS-050



## Wireless 300 PSIG Pressure Meters

Indispensable to facility managers, fabricators, and legacy machine operators, Monnit's 300 PSIG Wireless Pressure Meter remotely monitors line pressures (gas, liquid, or vapors). If pressure exceeds user-defined limits, the user receives an alert via an email, call, or text.

<b>Battery/Enclosure</b>	<b>Part Number</b>
AA	MNS2-9-W2-PS-300
Industrial	MNS2-9-IN-PS-300



## Wireless 750 PSIG Pressure Meters

Measure gas, liquid, and vapor pipeline pressure up to 750 PSIG in utilities, refineries, labs, machine shops, water management, manufacturing, HVAC, and many others. The ALTA 750 PSIG Pressure Meter uses a 5-volt transducer to assess pressure based on your preset parameters in the cloud-based iMonnit Sensor Management and Monitoring Software.

<b>Battery/Enclosure</b>	<b>Part Number</b>
AA	MNS2-9-W2-PS-750
Industrial	MNS2-9-IN-PS-750



## Wireless 3000 PSIG Pressure Meters

Like all ALTA PSIG Pressure Meters, the 3000 PSIG Pressure Meter monitors gas, liquid, and vapor supply lines in many settings or industry applications. This pressure meter can handle high-pressure lines of many types, be it in water management systems, petrochemical processing plants, health care facilities, manufacturing processes, or commercial HVAC/R systems.

<b>Battery/Enclosure</b>	<b>Part Number</b>
AA	MNS2-9-W2-PS-3000
Industrial	MNS2-9-IN-PS-3000



## Button Press Sensors

### Wireless Button Press Sensors

Need help providing swift customer service or deploying a large-scale sensor network? Instant alerts from Monnit's Wireless Button Press Sensors support you by streamlining sensor deployment and expediting customer service requests.

<b>Battery/Enclosure</b>	<b>Part Number</b>
AA	MNS2-9-W2-TS-ST
Coin Cell	MNS2-9-W1-TS-ST



## Gas Detection Sensors

### Wireless Carbon Monoxide (CO) Sensor

This unique battery-powered sensor monitors job sites, offices, and residential complexes for carbon monoxide (CO). Within a small footprint, the MEMS-based device packs a 0–1,000 PPM measurement range and automated data logging.

**Battery/Enclosure** AA  
**Part Number** MNS2-9-W2-GS-C1



### Wireless Carbon Dioxide (CO2) Sensor

Trusted by facility managers, this MEMS-based sensor monitors CO2 levels in the air. Get an alert if CO2 levels surpass preset limits. It's used to protect indoor air quality in greenhouses, marine vessels, and HVAC systems.

**Battery/Enclosure** AA  
**Part Number** MNS2-9-W2-GS-C2



### Wireless Hydrogen Sulfide (H2S) Gas Sensor

This safety sensor tracks the presence of H2S gas, which is toxic and flammable. Use to safeguard workers in oil / gas production, wastewater treatment, utilities, and other hazardous areas.

**Battery/Enclosure** AA  
**Part Number** MNS2-9-W2-GS-H2S



## Resistance Sensors

### Wireless Resistance Sensor

These sensors read the resistance across a resistive load up to 250K Ohms and are meant to connect to passive devices only.

**Battery/Enclosure** AA  
Coin Cell  
Industrial  
**Part Number** MNS2-9-W2-RS-ST-L03  
MNS2-9-W1-RS-ST-L03  
MNS2-9-IN-RS-ST-L03



## Ultrasonic Ranging Sensors

### Wireless Enterprise Ultrasonic Ranging Sensor

This enterprise-grade remote monitoring solution measures the distance between itself and objects in its path. Use for liquid-level detection, inventory status, object detection and other indoor or outdoor applications.

**Battery/Enclosure**  
AA

**Part Number**  
MNS2-9-W2-US-ST



### Wireless Industrial Ultrasonic Ranging Sensor

Packaged in a weatherproof housing, Monnit's ALTA Industrial Ultrasonic Ranging Sensor measures levels or detects objects. Indoor and outdoor applications include vehicle / object detection, capturing liquid levels, and tracking inventory.

**Battery/Enclosure**  
Industrial

**Part Number**  
MNS2-9-IN-US-IN-MPL-PA



## Air Quality Sensor

### Wireless Air Quality Sensor

This mount-and-monitor device measures particulate matter that's coarse (PM10), fine (PM2.5), and ultra-fine (PM1) inside mines, production facilities, commercial kitchens and facilities, as well as business buildings. This unit is powered by line-power and has a battery backup.

**Battery/Enclosure**  
AA

**Part Number**  
MNS2-9-W2-AQ-P25A-LPO



## Air Velocity Sensors

### Wireless Air Velocity Sensors

The Air Velocity Sensor measures the pressure difference between two input ports, as well as ambient temperature and altitude to determine airflow speed in a system. Use in sensitive areas, e.g., hospitals and clean rooms.

**Battery/Enclosure**

AA  
Industrial

**Part Number**

MNS2-9-W2-PS-AV-LPO  
MNS2-9-IN-PS-AV



## Differential Air Pressure Sensors

### Wireless Differential Air Pressure Sensors

This sensor measures the pressure difference between its two ports. Ideal for food service, healthcare, and academia. Common applications include clean rooms, pharmaceutical production, commercial kitchens, and HVAC or applications where negative air pressure monitoring is required.

**Battery/Enclosure**

AA  
Industrial

**Part Number**

MNS2-9-W2-PS-DP-LPO  
MNS2-9-IN-PS-DP



## Food Probe Thermometer

### Wireless Food Probe Thermometer

The ALTA Food Temperature Probe replaces manual temperature checks and enhances food quality and safety by bringing the power of remote data collection to commercial kitchens, food production, and restaurants.



**Battery/Enclosure**

AAA

**Part Number**

MNS2-9-W2-TS-FP



## Vehicle Detection Sensor

### WirelessVehicleDetect/Counter Sensor

This easy-to-deploy sensor detects vehicle presence, counts traffic, and tracks the time a vehicle is parked. Ideal for fleet management, parking garages, service centers, curbside retail, and more.

**Battery/Enclosure**  
Industrial

**Part Number**  
MNS2-9-IN-VS-TT



## Propane Tank Monitoring

### Wireless Propane Tank Level Sensor

Remotely monitor propane levels from anywhere via a smartphone or PC. This turnkey propane sensor works with Sr & Jr R3D® Remote Ready gauges. Prevent unnecessary in-the-field trips and maintain customer satisfaction.

**Battery/Enclosure**  
Industrial

**Part Number**  
MNS2-9-IN-HE-MG



## Soil Moisture Monitoring

### Soil Moisture Sensor

Get critical insights from your soil about how well you water with the ALTA Wireless Soil Moisture Sensor. It's perfect for measuring soil water tension (within a range of 0 to 240 centibar (cb) or kilopascal (kPa)) and temperature (-40°C to 125°C (-40°F to 257°F)). Improving irrigation scheduling and water conservation is easier because you'll know when and where to water your crops more precisely.

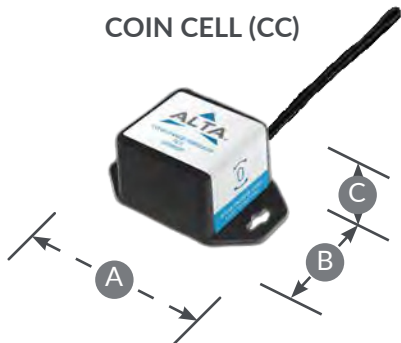
**Battery / Enclosure**  
Industrial

**Part Number**  
MNS2-9-IN-WS-WM-L05



# Monnit ALTA Sensor Sizes

COIN CELL (CC)



- A:** 2.0 inches / 50.8 mm
- B:** 1.125 inches / 28.57 mm
- C:** 0.875 inches / 22.22 mm

DOUBLE AA (AA)



- A:** 4.375 inches / 111.12 mm
- B:** 2.470 inches / 62.73 mm
- C:** 1.111 inches / 28.21 mm



INDUSTRIAL (IN)


- A:** 3.701 inches / 94.00 mm
- B:** 2.316 inches / 58.82 mm
- C:** 1.378 inches / 35 mm

**Dimensions for standard housing sizes.  
For sensors in non-typical housings, please refer to their data sheets.**

Authorized Reseller

**MONNIT.**

IoTech Solutions (PTY) Ltd • Gqeberha, Eastern Cape, South Africa •  
+2763 900 3492 [www.iotech-solutions.co.za](http://www.iotech-solutions.co.za)

  
**IOTECH**  
SOLUTIONS  
Smart Sensing. Real Solutions





## ALTA® Gateways

### XL Gateways

XL IoT Gateway	1
XL Industrial IoT Gateway	1
XL Ethernet Gateway	1

### Cellular IoT Gateways

Industrial IoT Gateway	2
IoT Gateway	2

### International Gateways

3G International Gateway	3
--------------------------	---

### Ethernet Gateway

ALTA Ethernet Gateway	4
-----------------------	---

### Advanced EDGE Gateway

Advanced EGDE Gateway	4
-----------------------	---

### Modbus

Serial Modbus Gateway	4
-----------------------	---

### Sensor Adapter

Wireless Sensor Adapter	5
-------------------------	---

### ALTA Gateway Sizes

6



For more information about these products or to place an order, please contact [info@iotech-solutions.co.za](mailto:info@iotech-solutions.co.za) or +2763 900 3492. Visit [www.iotech-solutions.co.za](http://www.iotech-solutions.co.za)

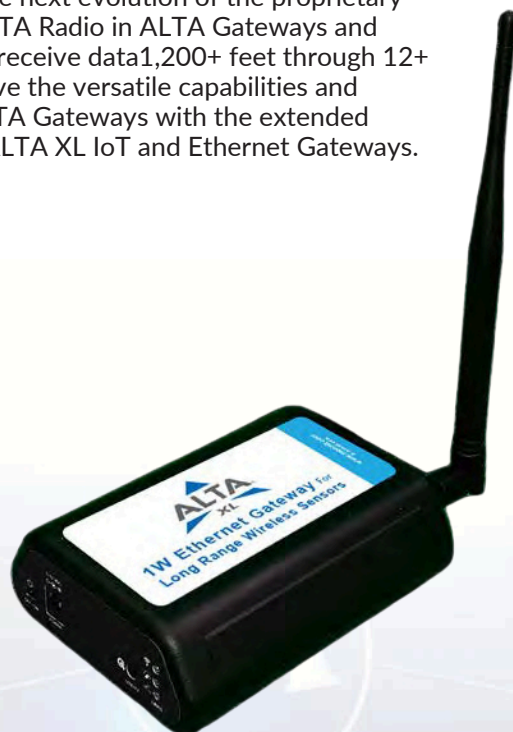




## ALTA XL® Gateways

### Send Sensor Data to Greater Distances

The new ALTA XL® IoT and Ethernet Gateways feature a powerful wireless transceiver with up to 1 Watt transmission strength and an amplified receiver. This IoT technology allows the new gateways to send and receive data communications with ALTA® Sensors 2,000+ feet through 18+ walls in commercial, rugged, and remote environments. The new ALTA XL Gateways represent the next evolution of the proprietary long-range wireless ALTA Radio in ALTA Gateways and Sensors that send and receive data 1,200+ feet through 12+ walls. Now you can have the versatile capabilities and connectivity of our ALTA Gateways with the extended wireless range of the ALTA XL IoT and Ethernet Gateways.



## ALTA XL Gateways

### ALTAXL® IoT Gateway

The ALTA XL® Commercial Wireless IoT Gateway features a powerful wireless transceiver with up to 1 Watt transmission strength, an amplified receiver, and 4G LTE CAT-M1/NB2 cellular technology to backhaul ALTA® Wireless Sensor data. Like its ALTA counterpart, the gateway also aggregates sensor data. It communicates with the cloud-based iMonnit® monitoring software via cellular transmission, making it ideal for remote locations or unavailable Internet. It has GPS data tracking capability as an add-on service, provides up to 60 hours of battery backup, and sends notifications via text, email, or call if preset conditions are met or exceeded. Its RJ-45 Ethernet jack allows for local device configuration and diagnostics and supports connectivity backup.

**Part Number**

MNG3-9-CME-CCE-ND MNG3-9-CME-CCE-2Y



### ALTA XL® Industrial IoT Gateway

The ALTA XL® Industrial Wireless IoT Gateway touts ruggedized, long-range wireless technology on a 4G LTE CAT-M1/NB2 cellular platform. It also features a powerful wireless transceiver with up to 1 Watt transmission strength and an amplified receiver. Manufacturing and other remote industrial environments can use the gateway to keep an ALTA Wireless Sensor network connected where cellular network connectivity is available and wired connections may be complex. The Industrial IoT Gateway provides the latest ALTA data security encryption and radio frequency interference immunity. It features GPS hardware for location awareness data as an additional service, magnetic power and utility switches, up to 60 hours of battery backup, and stores up to 32,000 sensor messages.

**Part Number**

MNG3-9-CME-IN-ND MNG3-9-CME-IN-2Y



### ALTA XL® Ethernet Gateway

The ALTA XL® Ethernet Gateway features a powerful wireless transceiver with up to 1 Watt of transmission power and an amplified receiver. The gateway allows ALTA Sensors to communicate with iMonnit® IoT Monitoring and Notification System without needing a PC. Simply provide power and plug the gateway into an open Ethernet port with an Internet connection. It will automatically connect with our online servers, providing the perfect solution for Internet-enabled commercial locations.

The ALTA XL Ethernet Gateway is an advanced gateway that enables fast, reliable IoT data solutions. It's specifically designed to respond to the increasing market need for global technology that accommodates various vertical IoT application segments and remote wireless sensor management solutions.

**Part Number**

MNG3-9-EGW-CCE



## Connect to Advanced Cellular Technology with the New ALTA IoT Gateway

With cellular network technology continually evolving, Monnit ensures your Internet of Things (IoT) network keeps up and is also ready for the future. The new ALTA<sup>®</sup> IoT Gateway showcases a 4G LTE CAT-M1/NB2 cellular engine in its industrial and commercial versions. With this cellular platform, the ALTA IoT Gateway ensures your ALTA Wireless Sensors stay connected to the Internet in remote locations where cellular network connectivity is available. In addition to its cellular connectivity, the ALTA IoT Gateway's key features include:

- Works in tandem with iMonnit cloud-based software to connect and configure ALTA Wireless Sensors and protect, aggregate, and communicate data, so it's available on-demand anytime, anywhere on a mobile device.
- Features an Ethernet platform (commercial only) with an RJ-45 10/100BASE-TX Ethernet jack that provides local device configuration, diagnostics, and connectivity backup.
- Delivers the latest ALTA security encryption, long-range transmission, and radio frequency interference immunity for up to one mile (line-of-sight), and up to 1,200+ feet through 12+ walls (non-line-of-sight).
- Provides 60-hour battery backup in the event of a power outage. ☑ Stores up to 32,000 sensor messages in its memory if Internet connectivity is lost. Then it sends the saved data to iMonnit once cellular services is restored.
- Offers GPS data tracking capability as an add-on service. ☑ Integrates easily into IoT applications or use cases with a wireless Internet connection or where IT infrastructure is dedicated to other resources.



## Cellular IoT Gateways

### ALTA Industrial IoT Gateway

The ALTA® Industrial Wireless IoT Gateway touts rugged, long-range wireless technology running on a 4G LTE CAT-M1/NB2 cellular platform. Manufacturing and other remote industrial environments can use the ALTA Industrial IoT Gateway to keep an ALTA Wireless Sensor network connected where cellular network connectivity is available and wired connections may be complex. The Industrial IoT Gateway provides ALTA data security encryption and radio frequency interference immunity. It also features GPS hardware for location awareness data as an additional service, up to 60 hours of battery backup, and stores up to 32,000 sensor messages.



**Part Number**

MNG2-9-CME-IN

### ALTA IoT Gateway

The ALTA® Commercial Wireless IoT Gateway runs a 4G LTE CAT-M1/NB2 wireless engine and integrates Monnit's wireless access point network to connect ALTA Wireless Sensors to leading cellular networks. It's RJ-45 Ethernet jack allows for local device configuration and diagnostics and supports connectivity backup.

The ALTA IoT Gateway aggregates sensor data and communicates with the cloud-based iMonnit® monitoring software via cellular transmission, making it ideal for remote locations or where the Internet isn't available. It comes with GPS data tracking capability as an add-on service, provides up to 60 hours of battery backup, and stores up to 32,000 sensor messages. The IoT Gateway aggregates sensor data and sends notifications via text, email, or call if preset conditions are met or exceeded.



**Part Number**

MNG2-9-CME-CCE

## International Gateways

### International 3G Gateway

The Monnit ALTA® International 3G Cellular Gateway (868MHz for use in Europe, Middle East, Africa and 433MHz for Asia Pacific except Japan and Korea), is based on a 3G (UMTS/GSM) wireless engine and comes integrated with Monnit's wireless access point network for use with all Monnit Wireless Sensors. These gateways allow the sensors to operate on the world's leading cellular networks. Monnit Cellular Gateways communicate with the iMonnit® (cloud or on-premises) monitoring software via cellular transmission, making them ideal for remote locations or where the Internet is not available. The system aggregates sensor information and sends notifications via text, email, or call if user-defined conditions are met or exceeded.



**Part Number**

MNG2-8-3C3I-SC (EMEA)  
MNG2-4-3C3I-SC (APAC)

## Ethernet Gateways

### ALTA Ethernet Gateway 4

Monnit's ALTA® Ethernet Gateway 4 allows your Monnit ALTA® Wireless Sensors to communicate with the iMonnit™ Online Wireless Sensor Monitoring and Notification System without the need for a PC. Simply provide power and plug the gateway into an open Ethernet network port with an Internet connection. It will then automatically connect with our online servers, providing the perfect solution for commercial locations where there is an active Internet connection. The Power-Over-Ethernet option features modified gateway hardware allowing it to be powered through the Ethernet port. (Does not include PoE Power Injector.) Interfaces supported: Modbus, TCP/IP, and SNMP.



**Part Number**

MNG2-9-EGW-CCE



## Advanced EDGE Gateway

### Advanced EDGE Gateway

The multiple award-winning ALTA® Advanced EDGE Gateway aggregates data from feature-rich Monnit Wireless Sensors to mainstream cloud providers, such as Amazon Web Services, Google Cloud Platform, Microsoft Azure, or IBM Watson. Coupling the prominent MQTTS protocol and the IoT's broadest sensor range, Monnit's Edge Gateway fulfills a key IoT mission of making deployments more agile and productive. The Edge Gateway features a step-by-step guided, multilingual web interface for configuring and managing Monnit Wireless Sensors, as well as designating MQTT brokers. As the Ethernet-based gateway receives sensor data, the gateway "fingerprints" the data with a cryptographic validation stamp. This authenticated data is then transmitted to a cloud broker (or multiple brokers), where it arrives in a standard format. The Edge Gateway's integrated macros enable data configuration in virtually any format, such as JSON or XML, making it a powerful tool for data analysis and action.



**Part Number**

MNG2-9-EDG-CCE

**ALTA Advanced EDGE Gateway - 3-Time Award Winner!**



## Modbus

### SerialModbus Gateway

The ALTA Serial MODBUS Gateway (SMG) acts as a data concentrator for Monnit's ALTA long-range wireless sensor networks. This device allows you to connect up to 50 wireless sensing devices, per gateway, to your PLC or similar RS232/485 device. Monnit has recognized the importance of using open standards like Modbus, allowing ALTA Wireless Sensors to be used in the majority of industrial applications. Modbus is often used to connect a supervisory computer with a remote terminal unit (RTU) in supervisory control and data acquisition (SCADA) systems.



**Part Number**

MNG2-9-SG-SMG



## Sensor Adapter

### Wireless Sensor Adapter

The ALTA Wireless Sensor Adapter enables ALTA Wireless Sensors to communicate with your local or online wireless sensor monitoring system by connecting to a PC or third-party IoT gateways via USB connection.

#### Plug into a PC

If an on-site PC has an active Internet connection, it's simple to connect with iMonnit Sensor Configuration and Management Software online and install the free Monnit Gateway application. This combination allows you to pass sensor data to the online system.

The ALTA Wireless Sensor Adapter is specifically designed to respond to the increasing market need for global technology that accommodates several vertical M2M application segments and remote wireless sensor management solutions.



#### Part Number

MNG2-9-WSA-USB

# ALTA Gateway Sizes



## SENSOR ADAPTER

- A:** 3.5 inches / 88.9 mm
- B:** 2.545 inches / 64.64 mm
- C:** 1.007 inches / 25.57 mm

## COMMERCIAL



- A:** 3.8 inches / 96.52 mm
- B:** 5.004 inches / 127.10 mm
- C:** 1.51 inches / 38.35 mm

## INDUSTRIAL



- A:** 5.7 inches / 144.78 mm
- B:** 3.54 inches / 89.91 mm
- C:** 2.14 inches / 54.35 mm

Dimensions for standard housing sizes.  
For gateways in non-typical housings, please refer to their data sheets.

Authorized Reseller



IoTech Solutions (PTY) Ltd • Gqeberha, Eastern Cape, South Africa •  
+2763 900 3492 [www.iotech-solutions.co.za](http://www.iotech-solutions.co.za)





## IECEx-Certified Wireless Sensors

Three Monnit ALTA-ISX Long-Range Wireless Sensors are IECEx-certified under code: Ex ib IIA T3 Gb. Essentially, the IECEx-certified sensors are used in IEC Zone 1 areas where explosive industrial atmospheres of IEC group IIA gases (propane or similar) may be present.

These ALTA-ISX Sensors are not only certified as intrinsically safe in explosive atmospheres of group IIA and hazardous Zone 1 environments, but they're also:

*☒ Incapable of causing a spark or reaching a temperature (class T3) that could ignite an explosive atmosphere comprising a range of group IIA gases or dust*

*☒ Able to be used in many industrial applications worldwide where combustible gases (group IIA) may be present in Zone 1 areas*

## ALTA-ISX

<b>ALTA-ISX Sensors</b>	<b>1</b>
Dry Contact Sensor	1
PSIG Sensor	1
Temperature Sensor	1
<b>ALTA-ISX Sensor Sizes</b>	<b>2</b>



For more information about these products or to place an order, please contact [info@iotech-solutions.co.za](mailto:info@iotech-solutions.co.za) or +2763 900 3492. Visit [www.iotech-solutions.co.za](http://www.iotech-solutions.co.za)



## ALTA-ISX Sensors

### ALTA-ISX Wireless Dry Contact Sensor

Detect if contact is made or broken between two wired points. Ideal for monitoring tank level, physical access security, mechanical actuation, and equipment use.

**Battery / Enclosure**  
RAMWAY ER14505M / AA

**Part Number**  
MNS2-9-W2S-DC-CF-L01



### ALTA-ISX Wireless 300 PSIG Pressure Meter

Remotely monitor gas, liquid, or vapor line pressures up to 300 pounds per square in gauge (PSIG). It provides precise performance over the entire line pressure.

**Battery / Enclosure**  
RAMWAY ER14505M / AA

**Part Number**  
MNS2-9-W2S-PS-300



### ALTA-ISX Wireless Temperature Sensor

Measure temperatures ranging from 233°K to 393°K (-40°C to +120°C and -40°F to +247°F) using a Negative Temperature Coefficient (NTC) thermistor with a lead.

**Battery / Enclosure**  
RAMWAY ER14505M / AA

**Part Number**  
MNS2-9-W2S-TS-ST-L03



## ALTA-ISX Sensor Size



**A:** 4.375 inches / 111.12 mm

**B:** 2.470 inches / 62.73 mm

**C:** 1.111 inches / 28.21 mm





## PoE•X Sensors

PoE•X Sensors plug into a building's Power Over Ethernet (PoE) infrastructure and remotely monitor critical systems and/or infrastructure for hazards, such as water leaks. This data provides smart building operators with tremendous data to economize operation by conserving resources while enhancing comfort. If a monitored variable exceeds specified thresholds, a user is alerted via text, email, or call.

Monnit's PoE•X Sensors use the same PoE cable to both receive power and transmit data. This two-in-one capability maximizes space utilization and addresses needs for a broad layout and high-density sensor networks, such as those needed for server rooms and data centers.

## PoE•X

<b>PoE•X Temperature Sensors</b>	<b>1</b>	<b>PoE•X Water Rope Sensor</b>	<b>3</b>
PoE•X Standard Temperature Sensor	1	<b>PoE•X Dry Contact Sensor</b>	3
PoE•X High Temperature Sensor	1	<b>PoE•X Open / Close Sensor</b>	4
PoE•X Low Temperature Sensor	1	<b>PoE•X Motion Detection Sensor</b>	4
<b>PoE•X Duct Temperature Sensor</b>	<b>2</b>	<b>PoE•X Power Adapters</b>	<b>4</b>
<b>PoE•X Thermocouple Sensor</b>	<b>2</b>	<b>PoE•X Sensor Sizes</b>	<b>5</b>
<b>PoE•X Humidity Sensor</b>	<b>2</b>		
<b>PoE•X Water Detect Sensor</b>	<b>3</b>		

For more information about these products or to place an order, please contact [info@iotech-solutions.co.za](mailto:info@iotech-solutions.co.za) or +2763 900 3492. Visit [www.iotech-solutions.co.za](http://www.iotech-solutions.co.za)



## PoE•X Temperature Sensors

### PoE•X Standard Temperature Sensor

Plug the PoE•X Standard Temperature Sensor into your facility's Power over Ethernet (PoE) network to accurately measure temperatures from  $-40^{\circ}\text{C}$  to  $+125^{\circ}\text{C}$  ( $-40^{\circ}\text{F}$  to  $+257^{\circ}\text{F}$ ). With a precision thermistor, it's accurate to  $\pm 1^{\circ}\text{C}$  ( $\pm 1.8^{\circ}\text{F}$ ) or  $\pm 0.25^{\circ}\text{C}$  ( $\pm 0.45^{\circ}\text{F}$ ) with your calibration.

**Battery / Enclosure**

PoE-powered; Line power optional

**Part Number**

MNS-P-C1-TS-ST-L03



### PoE•X High Temperature Sensor

Remotely monitor temperatures from  $-50^{\circ}\text{C}$  ( $-58^{\circ}\text{F}$ ) up to  $+370^{\circ}\text{C}$  ( $700^{\circ}\text{F}$ ) with the PoE•X High Temperature Sensor. It uses a glass-coated platinum resistance temperature detector (RTD) transducer and alerts you via text, email, or call when a preset temperature threshold is crossed.

**Battery / Enclosure**

PoE-powered; Line power optional

**Part Number**

MNS-P-C1-TS-HT-L03



### PoE•X Low Temperature Sensor

Use the same Power over Ethernet (PoE) cable to power the PoE•X Low Temperature Sensor and transmit its data. The sensor can help you monitor ultralow freezer temperatures and other freezing environments within temperatures from  $-200^{\circ}\text{C}$  to  $0^{\circ}\text{C}$ / $-328^{\circ}\text{F}$  to  $32^{\circ}\text{F}$  at  $\pm 0.5^{\circ}\text{C}$  calibrated accuracy.

**Battery / Enclosure**

PoE-powered; Line power optional

**Part Number**

MNS-P-C1-TS-LT-L03



## PoE•X Duct Temperature Sensor

### PoE•X Duct Temperature Sensor

Remotely monitor internal HVAC system temperature with the PoE•X Duct Temperature Sensor while maintaining a sealed environment. These sensors use a negative temperature coefficient (NTC)-type thermistor with a UL-listed plenum cable to measure temperatures from -40°C to 150°C/-40°F to 302°F.

**Battery / Enclosure**

PoE-powered; Line power optional

**Part Number**

MNS-P-C1-TS-DT-L08



## PoE•X Thermocouple Sensor

### PoE•X Thermocouple Sensor

The PoE•X Thermocouple Sensor has a hardwired connector to measure high-temperature applications from -100°C (-148°F) to 400°C (752°F). It's ideal for monitoring temperatures for commercial ovens, industrial production processes, electric power generation, furnace performance, and more.

**Battery / Enclosure**

PoE-powered; Line power optional

**Part Number**

MNS-P-C1-TS-TC-HW



## PoE•X Humidity Sensor

### PoE•X Humidity Sensor

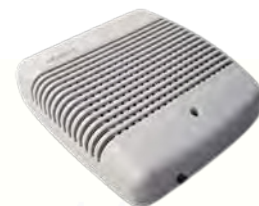
Monitor air moisture percentage and the temperature in any room or environment with the PoE•X Humidity Sensor. It measures the relative humidity (RH) with a +/- 3% accuracy (between 10–90% RH), temperature, and dew point in facilities like greenhouses, grow houses, and museums.

**Battery / Enclosure**

PoE-powered; Line power optional

**Part Number**

MNS-P-C1-HU-RH



## PoE•X Water Detect Sensor

### PoE•X Water Detect Plus Sensor

The PoE•X Water Detect Plus Sensor monitors the presence or non-presence of non-combustible liquids, mainly water, with a 3-foot probe-capped leaded wire in areas that may be prone to pooling or flooding from weather and plumbing leaks. The probe's electrical circuit minimizes false alarms.

**Battery / Enclosure**

PoE-powered; Line power optional

**Part Number**

MNS-P-C1-WS-WP-L03



## PoE•X Water Rope Sensor

### PoE•X Water Rope Sensor

Run the PoE•X Water Rope Sensor's conductive polymer rope along foundations, walkways, walls, pipes, and other water or liquid-prone areas. The sensor detects water intrusion, plumbing leaks, or pooling water via its 10-foot rope. You can add 10-foot extensions for up to 100-feet of detection.

**Battery / Enclosure**

PoE-powered; Line power optional

**Part Number**

MNS-P-C1-WS-WR



## PoE•X Dry Contact Sensor

### PoE•X Dry Contact Sensor

Within 15 minutes, the sensor can be mounted and wired to two endpoints (such as existing switches or contact plates). Be alerted via email, text, or call if a contact is broken (indicating that the points are no longer touching) or if the two points make contact when they shouldn't be.

**Battery / Enclosure**

PoE-powered; Line power optional

**Part Number**

MNS-P-C1-OC-ST



## PoE•X Open / Closed Sensor

### PoE•X Open / Closed Sensor

Ensure doors, windows, and lids are closed, and people follow lockup procedures with the PoE•X Open-Closed Sensor. Configure a switch and trigger magnet to report if a door is open or closed. It senses if a cooler or freezer door has been open for excessive time or a window opened after hours.

**Battery / Enclosure**

PoE-powered; Line power optional

**Part Number**

MNS-P-C1-OC-ST



## PoE•X Motion Detect Sensor

### PoE•X Motion Detection Sensor

The PoE•X Motion Detection Sensor senses motion and movement using a passive infrared (PIR) element. You can be alerted to temperature changes by people or animals moving through the viewing area of up to 15 feet and 80 degrees. Increase security, coordinate occupancy, and protect assets.

**Battery / Enclosure**

PoE-powered; Linepower optional

**Part Number**

MNS-P-C1-MS-IR



## PoE•X Power Adapters

### Optional PoE•X Power Adapters

**Part Number**

MNS-P-C1-MS-IR



# Monnit PoE•X Sensor



- A:** 3.917 inches / 99.50 mm
- B:** 4.133 inches / 105.00 mm
- C:** 1.340 inches / 34.05 mm



Authorized Reseller

IoTech Solutions (PTY) Ltd • Gqeberha, Eastern Cape, South Africa •  
+2763 900 3492 [www.iotech-solutions.co.za](http://www.iotech-solutions.co.za)





### MoWi Sensors

Combine the simplicity of Wi-Fi connectivity with the power of the Internet of Things (IoT).

In 15 minutes or less, you can connect MoWi Sensors—Monnit Wi-Fi Sensors—to your Wi-Fi network. Just download and install an easy-to-use MoWi Setup Utility and driver for the MoWi Programming Cable, and you're ready to set up MoWi Sensors.

Then, you'll be running an IoT network of Wi-Fi sensors measuring everything from temperature to motion to water.

Place these sensors virtually anywhere there's Wi-Fi connectivity in your offices, lab, factory, warehouse, store, and more locations to get data logging and instant alerts. Your MoWi Sensor data is easily accessible through our iMonnit online software on a desktop PC or mobile device.

### MoWi

<b>MoWi Temperature Sensors</b>	<b>1</b>	<b>MoWi Open / Closed Sensor</b>	<b>3</b>
MoWi Standard Temperature Sensor	1	<b>MoWi Button Press Sensor</b>	<b>3</b>
MoWi High Temperature Sensor	1	<b>MoWi Motion Detection Sensor</b>	<b>3</b>
MoWi Low Temperature Sensor	1	<b>MoWi Sensor Sizes</b>	<b>4</b>
<b>MoWi Humidity Sensor</b>	<b>2</b>		
<b>MoWi Water Detection Sensor</b>	<b>2</b>		
<b>MoWi Dry Contact Sensor</b>	<b>2</b>		

For more information about these products or to place an order, please contact [info@iotech-solutions.co.za](mailto:info@iotech-solutions.co.za) or +2763 900 3492. Visit [www.iotech-solutions.co.za](http://www.iotech-solutions.co.za)



## MoWi Standard Temperature Sensor

### Standard Temperature Sensor

Connect the MoWi Temperature Sensor to your facility's Wi-Fi network to accurately measure temperatures in a variety of areas, use cases, or assets from  $-40^{\circ}\text{C}$  to  $+60^{\circ}\text{C}$  ( $-40^{\circ}\text{F}$  to  $+185^{\circ}\text{F}$ ). With a precision thermistor, it's accurate to  $\pm 1^{\circ}\text{C}$  ( $\pm 1.8^{\circ}\text{F}$ ) or  $\pm 0.25^{\circ}\text{C}$  ( $\pm 0.45^{\circ}\text{F}$ ) with your calibration.

**Battery / Enclosure**

Two replaceable 1.5V AA batteries (included)

**Part Number**

MNS-2-WF-TS-ST



## MoWi High Temperature Sensor

### High Temperature Sensor

Remotely monitor commercial and industrial ovens, heaters, furnaces, and boilers with the MoWi High Temperature Sensors. Measure temperatures from  $-50^{\circ}\text{C}$  ( $-58^{\circ}\text{F}$ ) up to  $+370^{\circ}\text{C}$  ( $700^{\circ}\text{F}$ ). It uses a glass-coated platinum resistance temperature detector (RTD) transducer and alerts you via text, email, or call.

**Battery / Enclosure**

Two replaceable 1.5V AA batteries (included)

**Part Number**

MNS-2-WF-TS-HT-L03



## MoWi Low Temperature Sensor

### Low Temperature Sensor

Monitor low-temperature sensitive environments, equipment, and assets in hospitals, cold chains, labs, food production plants, restaurants, and more with the MoWi Low Temperature Sensor. It can measure temperatures from  $-200^{\circ}\text{C}$  to  $0^{\circ}\text{C}$  ( $-328^{\circ}\text{F}$  to  $32^{\circ}\text{F}$ ) at  $\pm 0.5^{\circ}\text{C}$  calibrated accuracy.

**Battery / Enclosure**

Two replaceable 1.5V AA batteries (included)

**Part Number**

MNS-2-WF-TS-LT-L0



## MoWi Humidity Sensor

### Humidity Sensor

Assess air moisture percentage and the temperature in any room or environment with the MoWi Humidity Sensor. It measures the relative humidity (RH) with a +/- 3% accuracy (between 10–90% RH), ambient temperature, and dew point in facilities and keeps a data log if the Wi-Fi network goes down.

**Battery / Enclosure**

Two replaceable 1.5V AA batteries (included)

**Part Number**

MNS-2-WF-HU-RH-L0



## MoWi Water Detect Sensor

### Water Detect Sensor

Know what water is doing in and around your facilities—whether it's leaking, pooling, flooding, or running out where it shouldn't. With an integrated 802.11 b/g radio and a 3-foot leaded wire, the MoWi Water Detect Sensor monitors the presence or non-presence of non-combustible liquids, mainly water.

**Battery/ Enclosure**

Two replaceable 1.5V AA batteries (included)

**Part Number**

MNS-2-WF-WS-WD-L03



## MoWi Dry Contact Sensor

### Dry Contact Sensor

When you need to know if your equipment is in use or a door or gate is open, the MoWi Dry Contact Sensor can tell you. It detects if contact is made or broken between two wired endpoints. You can monitor product volume, physical access, mechanical actuation, and equipment use.

**Battery/ Enclosure**

Two replaceable 1.5V AA batteries (included)

**Part Number**

MNS-2-WF-DC-CF-L01



## MoWi Open / Closed Sensor

### Open / Closed Sensor

Mount the MoWi Open-Closed Sensor with a switch and trigger magnet on important doors, windows, gates, cabinets, and lids. Configure alerts to report if they're open or closed or opened after hours. For example, the sensor will tell you if a walk-in cooler or freezer door has been open for an excessive time.

**Battery / Enclosure**

Two replaceable 1.5V AA batteries (included)

**Part Number**

MNS-2-WF-OC-ST



## MoWi Button Press Sensor

### Button Press Sensor

The MoWi Button Press Sensor helps you track service completion and Wi-Fi coverage. When you press the sensor's button, the LED lights up and alerts that service is completed, help is needed, or Wi-Fi is available. The sensor's integrated with an 802.11 b/g radio to work with any Wi-Fi network.

**Battery / Enclosure**

Two replaceable 1.5V AA batteries (included)

**Part Number**

MNS-2-WF-PB-ST



## MoWi Occupancy Sensor

### Motion Detection Sensor

The MoWi Infrared Motion Detection Sensor senses motion and movement using a passive infrared (PIR) element. You can be alerted to temperature changes by people or animals moving through the viewing area within 16.4 feet (5 meters). Enhance security, track occupancy, and protect assets.

**Battery / Enclosure**

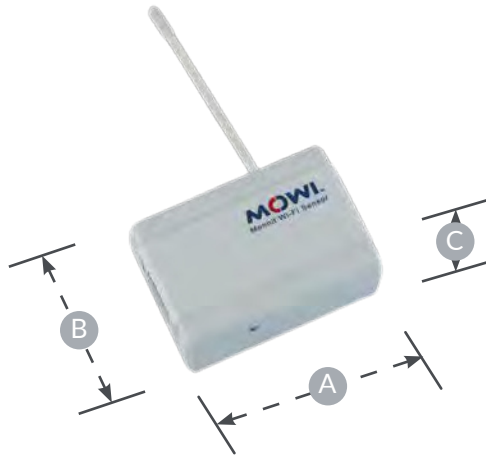
Two replaceable 1.5V AA batteries (included)

**Part Number**

MNS-2-WF-MS-IR



## Monnit MoWi Sensor Size



- A:** 3.00 inches / 76.2 mm
- B:** 2.00 inches / 50.8 mm
- C:** 1.25 inches / 31.75 mm



Authorized Reseller

IoTech Solutions (PTY) Ltd • Gqeberha, Eastern Cape, South Africa •  
+2763 900 3492 [www.iotech-solutions.co.za](http://www.iotech-solutions.co.za)

